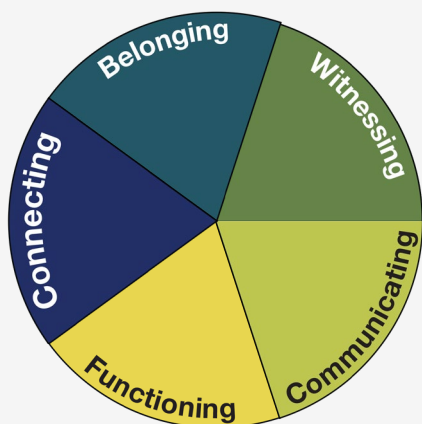


# Strategic Directions



## PYM's Directions

---

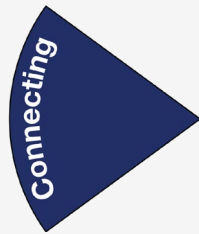


In 2014 the yearly meeting approved seven strategic directions which have guided our ministry. The directions merge nicely together to form five direction areas which are reviewed in this document. The text on each slide is the approved text of the directions. The italicized paragraphs below the slides is the approved description for the directions



**PYM's Directions**

---



**Connect Friends and meetings**  
to one another so that we may  
experience vibrant, Spirit-led  
faith community.

**Connect Friends**  
through effective  
communications and technology.

*Individuals and meetings will give time, gifts and experience in service, and in turn receive new insight, grounding and friendships, directly and indirectly enriching their meetings and their own spiritual lives.*

*We will connect Friends across the geography of PYM and with Friends from the wider world, in order to carry our concerns together. We will do this in a manner that allows everyone, without traveling, to participate in the life of the community*



**PYM's Directions**

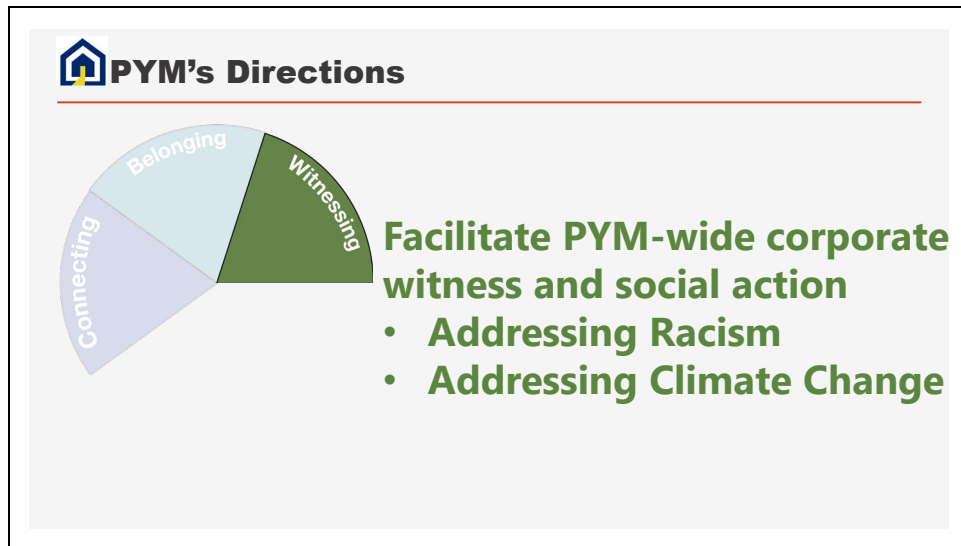
---

**Broaden Engagement & Deepen Relationship**


**Ensure our communities are welcoming & safe for all people**

*Because we are all interconnected, we seek to increase a sense of belonging to an extended family of Friends. To be effective and whole, we need each other. Our personal experience of being a Friend is deepened by worshipping, discerning business, and sharing community beyond our home meetings. Friends of all ages, locations, and interests will have ways of entering the community and will feel glad they've participated.*


*We will look courageously into the roots of inequity in our culture, be willing to see and feel the pain it can cause and choose to do whatever is necessary to take risks and to change. We will dismantle imposed barriers in our yearly and monthly meeting structures and activities, which impede our experience of God within our communities and within ourselves. We seek to make the congregations inside of our meetinghouses reflect the beauty and diversity of the world outside of them.*



*As seekers of Truth, we expect to be called to action. Together, as a PYM community, we will witness to the Light, contributing to transformational work in the world. We will encourage and support one another in taking risks together, as we make an impact on our society. We will enhance our effectiveness by focusing our corporate action on fewer, clearer goals.*

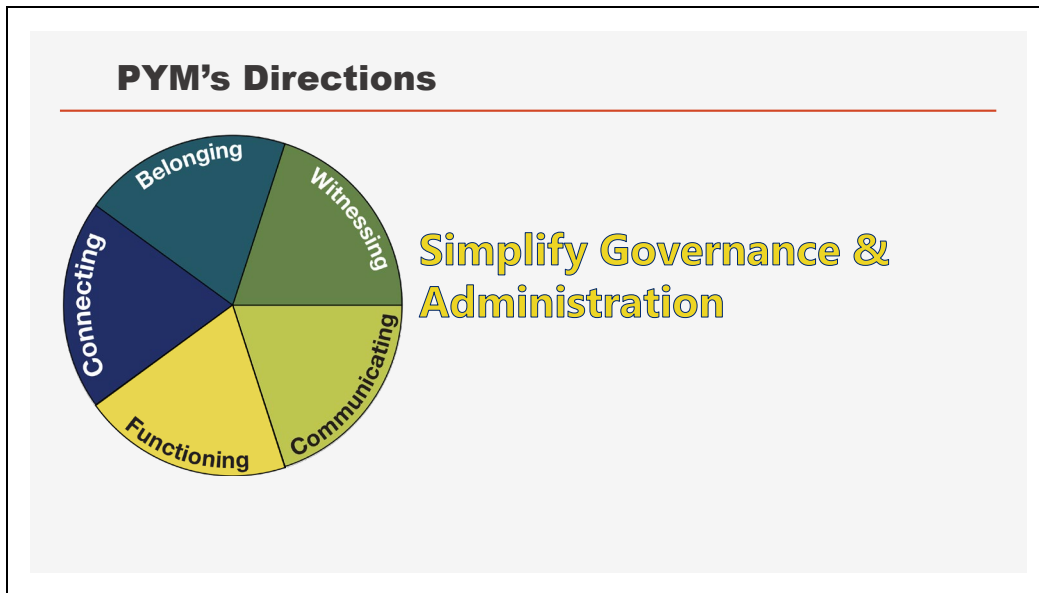
 **PYM's Directions**

---



**Develop and widely communicate clear messages about Quakers and PYM**

We will send boldly into the world the message of our distinctive Quaker faith and practice, so that we are known not only for our historic witness but also for our present action, encouraging others to join us, and so that all may be inspired.



We will use our finite resources of volunteer time and energy to focus primarily on God's work and to sustain our extended community. This process will simplify our structure and processes, clarify roles, responsibilities, authority, and accountability, and reduce the number of things we do. Thus, we will create new opportunities for access and participation, open to anyone with the skills, experience, and will serve, regardless of time and travel limitations.